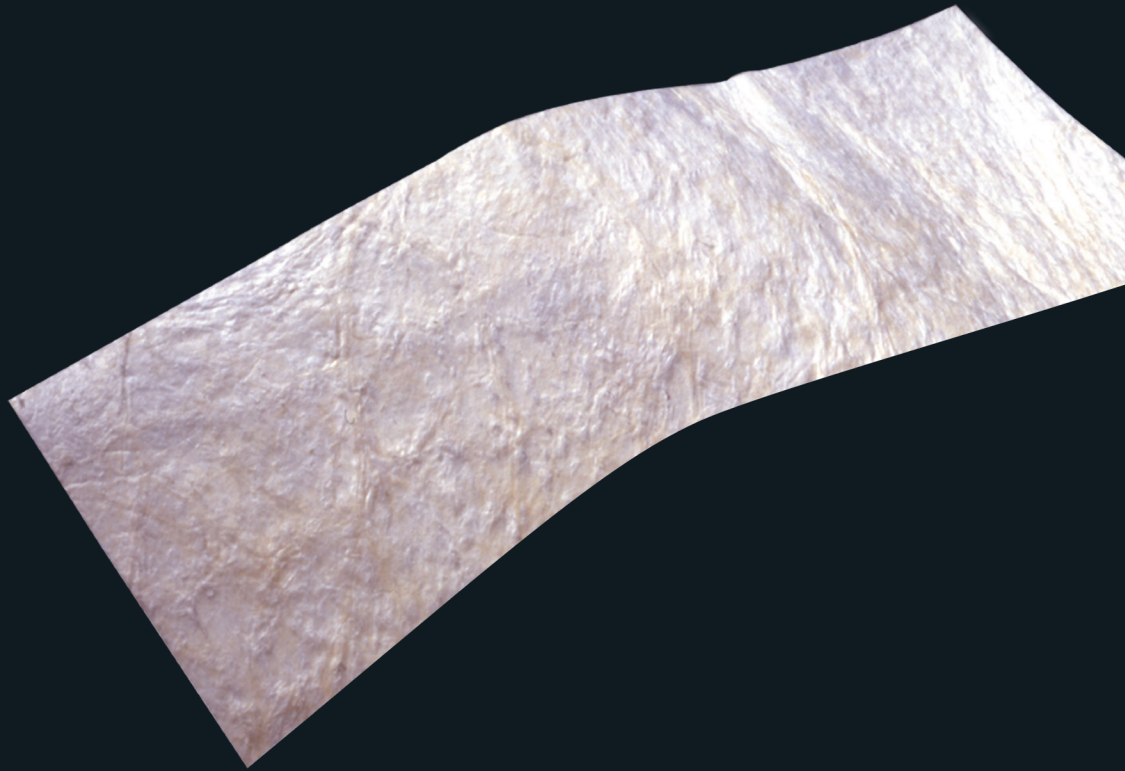




CORMATRIX[®] ECM[®]

FOR CAROTID REPAIR

Natural Acellular Biomaterial for the Reconstruction and Repair of Carotid Arteries

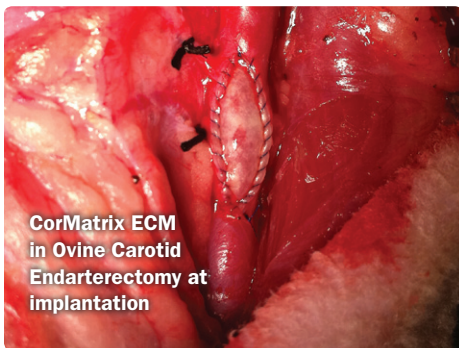


**REMODEL
REGROW
RESTORE**

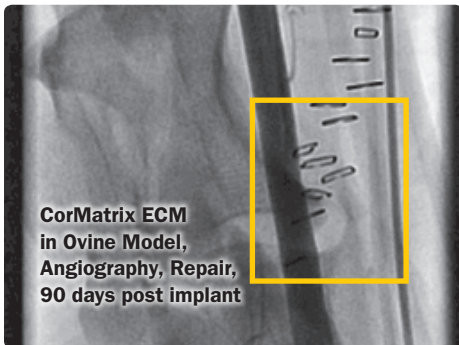


CORMATRIX[®]

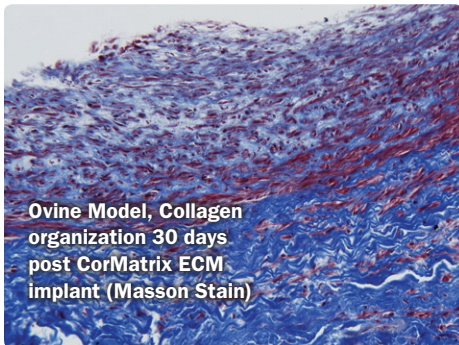
CORMATRIX[®] ECM[®] FOR CAROTID REPAIR



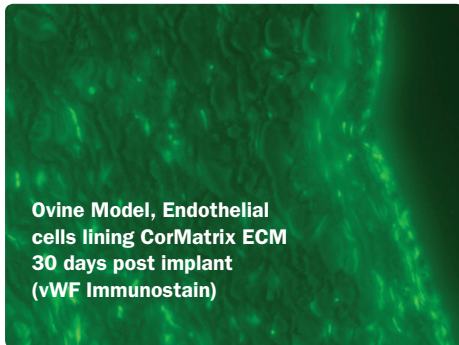
CorMatrix ECM
in Ovine Carotid
Endarterectomy at
implantation



CorMatrix ECM
in Ovine Model,
Angiography, Repair,
90 days post implant



Ovine Model, Collagen
organization 30 days
post CorMatrix ECM
implant (Masson Stain)



Ovine Model, Endothelial
cells lining CorMatrix ECM
30 days post implant
(vWF Immunostain)

CorMatrix ECM Benefits

- Porcine small intestine submucosa is a naturally occurring non-crosslinked biomaterial that once processed, yields a unique acellular Extracellular Matrix (ECM) that supports tissue repair and remodeling.
- CorMatrix ECM is processed in a manner that removes cells, leaving the complex extracellular matrix intact.
- Extracellular matrix materials have been used in over a million patients for general soft tissue reconstruction, pericardial and cardiac tissue repair, urogynecological procedures, wound treatment, and the repair of body wall defects.
- CorMatrix ECM material retains the natural composition of extracellular matrix molecules including collagen, growth factors, proteins, and cytokines which are known to have important roles in host tissue repair and remodeling.

CorMatrix ECM Benefits for Carotid Repair

- Remodels into native tissue
- Leaves no materials behind to induce a foreign body response
- Good suture retention strength
- Thickness similar to normal carotid artery
- Hemostatic: Minimal bleeding at suture lines
- Easily conforms to repair defect
- Good handling facilitates suturing

MATERIAL PROCESSING & PACKAGING

- Sterilized using ethylene oxide gas
- Confirmed viral inactivation
- Packaged individually in double-peel pouch
- Store at room temperature
- Re-hydrate for 10-20 minutes before use

ORDERING INFORMATION

Customer Service: 1-877-651-2628 (toll-free)

SIZE	THICKNESS	MODEL NO.
1CM X 10CM	6-PLY	CMCV-006-609
2CM X 10CM	6-PLY	CMCV-006-606

