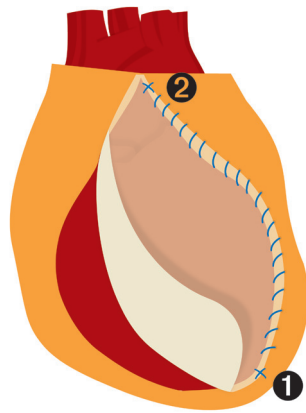


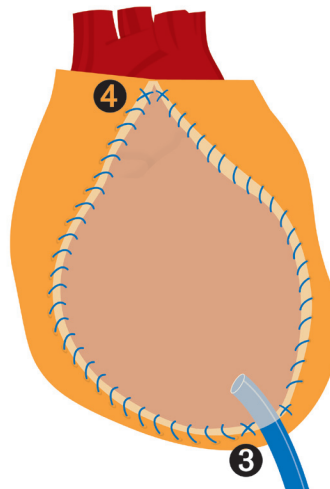
SUTURING TECHNIQUES

There are several possible techniques to closing the pericardium with CorMatrix ECM™. However, a circumferential closure with a running suture is needed to approximate the tissue at all points to the ECM. A running suture is therefore recommended.

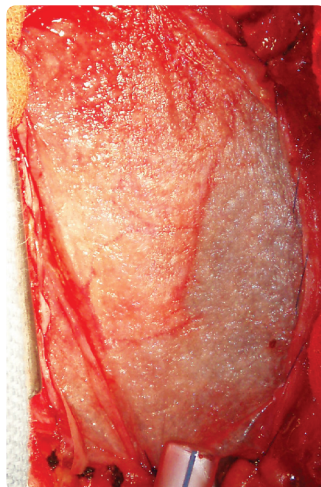


One technique is to align the lower edge of the ECM with the lower edge of the pericardium.

- ❶ Beginning at the left inferior edge of the opened pericardium place a 4-0 prolene through the pericardium and the corner of the ECM.
- ❷ Run that suture up to the left superior pericardium (approximately 1 stitch per cm) to approximate the edges and leave a tag.



- ❸ Place an angled chest tube into the pericardial space next to the starting suture in the left inferior corner.
- ❹ Start a new running stitch just medial to the chest tube and suture the inferior pericardium to the ECM. Continue this suture around the bottom right corner, up the right side, and across the top and tie to the superior left suture tag.



General Information:

- Place the edge of CorMatrix ECM in contact with viable tissue. There should be no tension on the suture lines.
- Drains may be placed under and/or over the ECM.
- ECM should be re-hydrated at least 10 minutes prior to suturing.
- Non-absorbable suture such as 4-0 or 5-0 Prolene is preferred so as not to interfere with the remodeling response.

Suturing Technique Surgical Video available