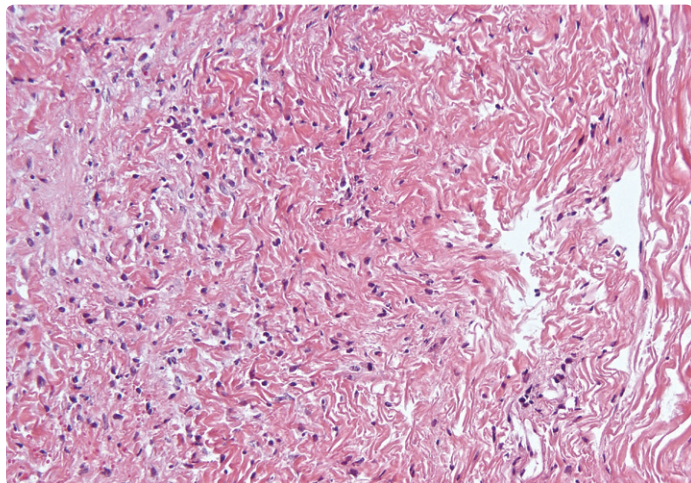
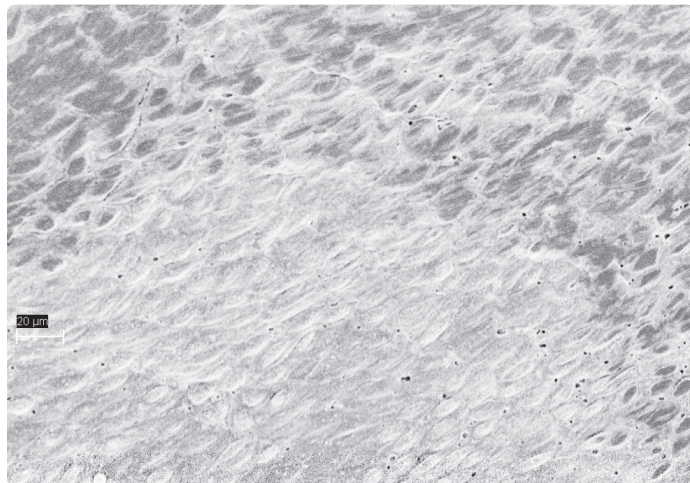


# TECHNICAL BULLETIN FOR CAROTID REMODELING

## CORMATRIX<sup>®</sup> ECM<sup>®</sup> FOR CAROTID REPAIR



CorMatrix ECM in Ovine Model, Cellular Integration, 30 days post implant (H&E Stain)



CorMatrix ECM in Ovine Model, Confluent endothelial lining 30 days post implant (Scanning Electron Microscopy)

### Material Safety

- Strict control of source animals
- Certified animal production facilities
- Use of a validated disinfection process
- Terminal sterilization to eliminate pathogens
- Independent testing to verify biocompatibility

### Summary of *in vitro* Mechanical Strength Results (maximum load)

Strength Category	Mean Value	Standard Deviation	Minimum Value	Maximum Value
Suture Retention Strength (lb <sub>f</sub> )	3.26	0.689	1.69	5.08
Tensile Tear Strength (lb <sub>f</sub> )	6.67	1.37	4.36	10.0
Probe Burst Strength (mmHg)	9,740	1,190	8,100	12,800

n=30 (10 test samples from each of 3 lots)

lb<sub>f</sub> - Pounds of Force

**REMODEL  
REGROW  
RESTORE**

CorMatrix ECM provides a natural bioscaffold matrix that enables the body's own cells to repair and remodel damaged tissue.

